



SafyBox BRES

Double Insulation enclosure



IP66

IK10

Non - metallic Enclosures

Made of fiberglass-reinforced polyester 7035, They are exceptionally durable, corrosion resistant, can withstand abuse & exposure to chemicals, water and extreme conditios



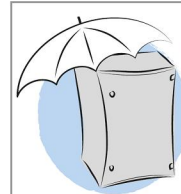
polyester boxes IEC62208



**AUTO
extinguible 960°**
 Material no propagador de llama
 y libre de halógenos.

**SHELF
extinguishing 960°**
 Does not feed flames
 and halogen free.

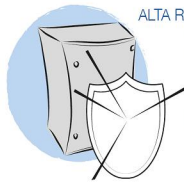
960° UNE-EN-60695-2 (IEC 60695)



**material
NO-HIGROSCÓPICO**
 Mínima absorción
 de agua.

**NON-HYGROSCOPIC
material**
 Minimum water
 absorption.

UNE-EN-60529 (IEC-60529)



**ALTA RESISTENCIA
al impacto**
 Soporta hasta
 20 kilojoules (IK10).

**high impact
RESISTANCE**
 Up to 20 Kilojoules
 (IK10).

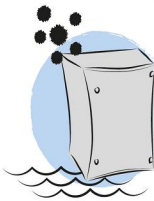
UNE-EN-50102 (IEC-62262)



**DURABILIDAD
máxima**
 Cero corrosión y
 resistencia a agentes químicos.

**maximum
DURABILITY**
 Zero corrosion and
 chemical resistant.

UNE-EN-60529 (IEC-60529)



**total
ESTANQUEIDAD**
 Ni agua, ni polvo: IP66.

**total degree of
PROTECTION**
 No water, nor dust: IP66.

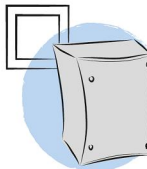
IP-66 UNE-EN-60529 (IEC-60529)



**COMPATIBILIDAD
electromagnética**
 Protección de las comunicaciones
 electrónicas.

**electromagnetic
COMPATIBILITY**
 Protecting electronics
 communications.

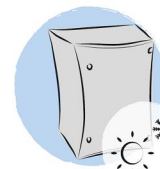
NOMINAL INTENSITY : 1,000A



**DOBLE
aislamiento**
 Máxima protección
 al contacto eléctrico.

**DOUBLE
insulation**
 Electrically Non-conductive.

NOMINAL VOLTAGE : 1000Vdc



**RESISTENTE
a climas agresivos**
 Protección UV y estable a cambios
 bruscos de temperatura (-60°/+120°).

**aggressive environment
RESISTANT**
 UV Protection and stable to extreme
 temperature changes (-60°/+120°).

UNE-EN-60439-1 (IEC 60439-1)



**montaje
RÁPIDO, FÁCIL
Y MODULAR**
 Plug & play
 sin herramientas especiales.

**FAST, EASY
AND MODULAR
installation**
 Plug & play
 without special tools.

UNE-EN-60439-1 (IEC 60439-1)



LIGERO
 Fácil manejo
 & "user friendly".

LIGHT
 Easy handling
 & user friendly.

CLASS F UNE-21305



custom laser



Get rid of labels that can be lost or faded!

Eliminate costly document holder, we will mark the wiring diagram directly in your enclosure!

Our laser printing system allows you to print:

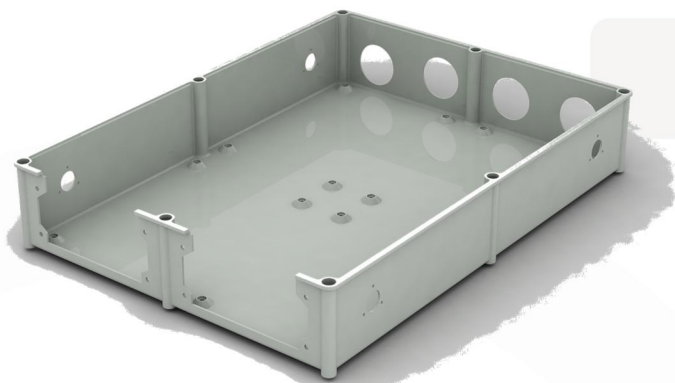
Your Company Logo or Corporate Image

Your QR/Bidi code

.....THINK OUT OF THE BOX &
GO BEYOND YOUR IMAGINATION.....



custom punching



We customize your enclosure on our fully automated 3D machine tool sections, been able to achieve the most complex drilling and machining on any of the enclosure sides, back and door/cover.

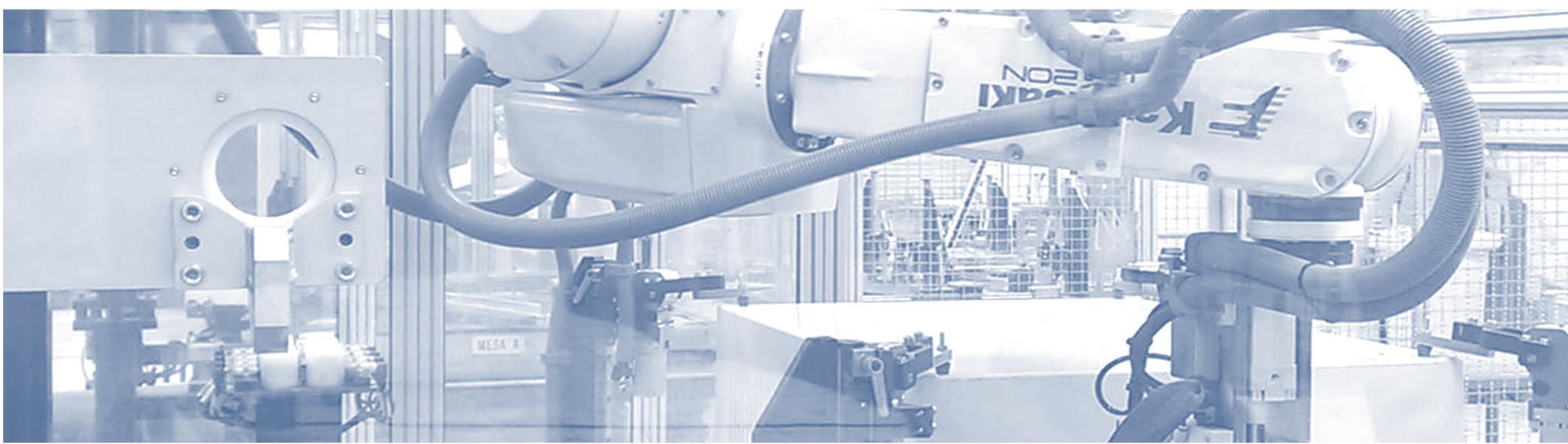
From cable entries, pushbutton and display cutouts, to different openings for modular enclosures we offer this comprehensive range of electrical and mechanical services to reduce the cost and time of our customers.



Our enclosure customized solutions are panel builder friendly, ready for direct assembling and avoiding manual machining and cut outs, most of the times inaccurate and inefficient.

In addition, due to our production structure, lead times on customized enclosures are similar to standard enclosures in most of the cases and on top of this there are no minimum order requirements, even a 1 off prototype unit can be ordered for customer approval.

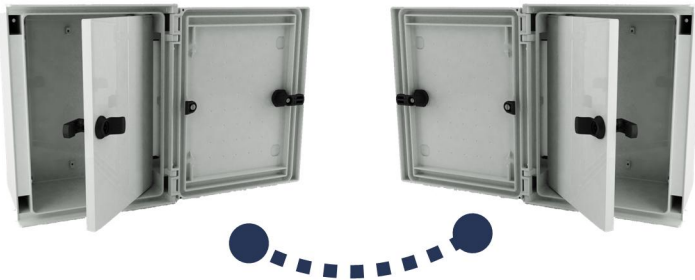
Your project ready, quick, convenient, fully customized and budget driven.



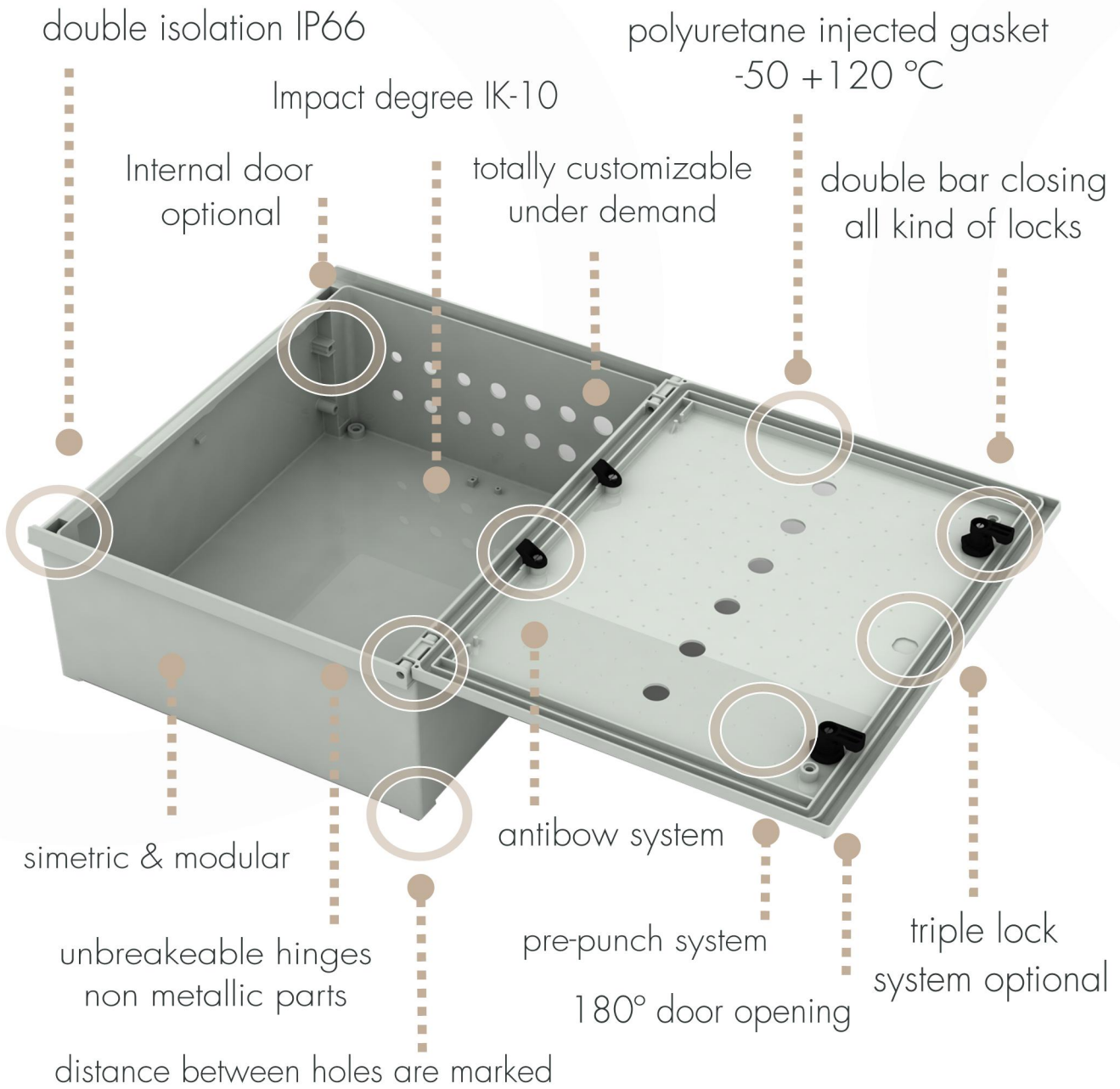


- stop to corrosion
- fire retardant
- waterproof
- double isolation
- customizable
- end user friendly

reversible



advantages BRES enclosure



standard empty plain

Includes : Empty Enclosure, rawl plugs and screws for direct wall mounting, screws for mounting plate 4x6x10, double bar lock and key (cdb-10)

CODE	DIMENSION	DESCRIPTION	EUROS	PACKING	WEIGHT
BRES-325	300x250x140	Polyester plain door	69,71	1	1,93
BRES-43	400x300x200	Polyester plain door	89,85	1	3,60
BRES-44	400x400x200	Polyester plain door	104,02	1	4,35
BRES-54	500x400x200	Polyester plain door	126,76	1	5,25
BRES-64	600x400x230	Polyester plain door	145,80	1	7,13
BRES-65	600x500x230	Polyester plain door	164,94	1	7,93
BRES-83	800x300x230	Polyester plain door	232,41	1	6,40
BRES-86	800x600x300	Polyester plain door	260,41	1	12,65
BRES-108	1000x800x300	Polyester plain door	492,07	1	19,50



9 different sizes from 300x250x140 to 1000x800x300



standard empty glazed

Includes : Empty Enclosure, rawl plugs and screws for direct wall mounting, screws for mounting plate 4xm6x10, double bar lock and key (cdb-10)

CODE	DIMENSION	DESCRIPTION	EUROS	PACKING	WEIGHT
BRES-325P	300x250x140	Enclosure glazed door	92,80	1	2,00
BRES-43P	400x300x200	Enclosure glazed door	124,15	1	3,57
BRES-44P	400x400x200	Enclosure glazed door	141,72	1	4,30
BRES-54P	500x400x200	Enclosure glazed door	183,75	1	5,21
BRES-64P	600x400x230	Enclosure glazed door	203,03	1	7,05
BRES-65P	600x500x230	Enclosure glazed door	220,05	1	7,56
BRES-83P	800X300X230	Enclosure glazed door	248,00	1	6,00
BRES-86P	800x600x300	Enclosure glazed door	364,88	1	12,15
BRES-108P	1000x800x300	Enclosure glazed door	619,40	1	18,90

standard bres glazed door, posible to install other kind of inspection windows



Polycarbonate
UV resistant

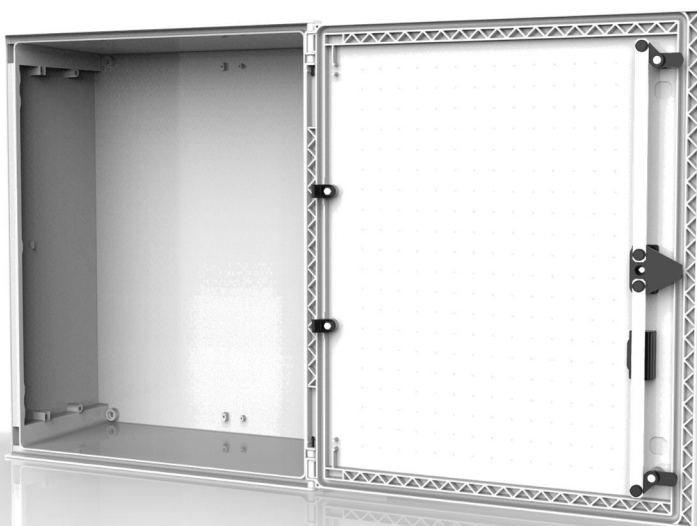


triple lock plain door

Includes : Empty Enclosure, rawl plugs and screws for direct wall mounting, screws for mounting plate 4x6x10, ** handle suitable to fit any European standard type of locking barrel

CODE	DIMENSION	DESCRIPTION	EUROS	PACKING	WEIGHT
BRES-43-3L	400x300x200	Plain door 3 point lock system	111,45	1	3,60
BRES-44-3L	400x400x200	Plain door 3 point lock system	125,62	1	4,35
BRES-54-3L	500x400x200	Plain door 3 point lock system	148,36	1	5,25
BRES-64-3L	600x400x230	Plain door 3 point lock system	181,80	1	7,13
BRES-65-3L	600x500x230	Plain door 3 point lock system	200,94	1	7,93
BRES-83-3L	800x300x230	Plain door 3 point lock system	268,41	1	6,40
BRES-86-3L	800x600x300	Plain door 3 point lock system	303,27	1	12,65
BRES-108-5L	1000x800x300	Plain door 5 point lock system	549,12	1	18,50

standard bres swing handle 3 point lock system, possible to install key locks

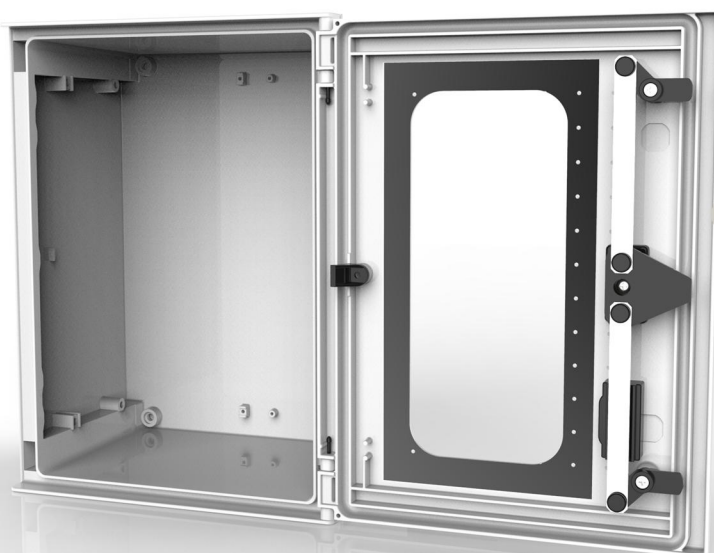


triple lock glazed door

Includes : Empty Enclosure, rawl plugs and screws for direct wall mounting, screws for mounting plate 4xm6x10, ** handle suitable to fit any European standard type of locking barrel

CODE	DIMENSION	DESCRIPTION	EUROS	PACKING	WEIGHT
BRES-43P-3L	400x300x200	Glazed door 3p.locking system	145,75	1	2,00
BRES-44P-3L	400x400x200	Glazed door 3p.locking system	163,32	1	3,57
BRES-54P-3L	500x400x200	Glazed door 3p.locking system	205,35	1	4,30
BRES-64P-3L	600x400x230	Glazed door 3p.locking system	239,03	1	5,21
BRES-65P-3L	600x500x230	Glazed door 3p.locking system	256,05	1	7,05
BRES-83P-3L	800X300X230	Glazed door 3p.locking system	327,39	1	7,56
BRES-86P-3L	800x600x300	Glazed door 3p.locking system	408,73	1	6,00
BRES-108P-5L	1000x800x300	Glazed door 3p.locking system	659,03	1	18,90

standard bres glazed door, posible to install other kind of inspection windows



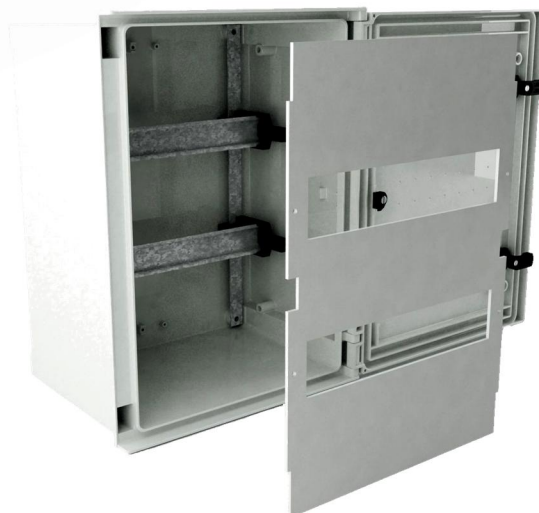
Polycarbonate
UV resistant



chassis for mcb's 18mm

Includes : chassis ready to install with screws

CODE	DIMENSION	DESCRIPTION	EUROS	PACKING	WEIGHT
CHM-325	270X226X110	MODULAR CHASSIS FLAT PACK-20MCB	44,76	1	1,15
CHM-43	365X278X125	MODULAR CHASSIS FLAT PACK-24MCB	56,35	1	1,22
CHM-44	365X378X125	MODULAR CHASSIS FLAT PACK-36MCB	59,48	1	1,50
CHM-54	465X378X125	MODULAR CHASSIS FLAT PACK-54MCB	75,65	1	1,80
CHM-64	565X378X125	MODULAR CHASSIS FLAT PACK-72MCB	103,74	1	2,32
CHM-65	565X478X125	MODULAR CHASSIS FLAT PACK-96MCB	119,65	1	2,62
CHM-83	765X278X125	MODULAR CHASSIS FLAT PACK-70MCB	122,14	1	2,22
CHM-86	765X578X125	MODULAR CHASSIS FLAT PACK-145MCB	131,92	1	4,37



Standard chassis for BRES enclosure, special layout design available



chassis for mcb's 18mm

Includes : chassis ready to install with screws

CODE	DESCRIPTION	EUROS	PACKING	WEIGHT
INR-511	Brass Insert 5x11	0,41	1	
RCO-316	Connection terminal (3x16 + 4x10 mm ²)	3,53	1	
RCO-416	Connection terminal (4x16 + 9x10 mm ²)	5,35	1	
TEX-18	Removable blanking 18mm lid	0,59	1	
SUP-23	Din elevator - 1 unit	3,00	1	



rco-316 & rco-416



Tex-18



Sup-23



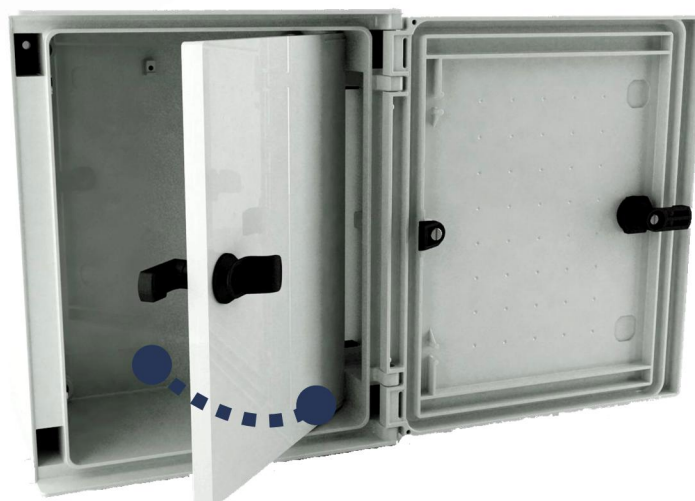
Kit chassis RAL7035

internal door kit

Includes : unassembled kit with Standard internal door + 1 double bar lock system + handle + inr-511 inserts + plastic hinges and pins

NO INCLUDING CABINET

CODE	DIMENSION	DESCRIPTION	EUROS	PACKING	WEIGHT
PUI-43	380x280x17	Internal door bres-43	57,36	1	0,5
PUI-44	380x380x17	Internal door bres-44	64,38	1	0,6
PUI-54	480x380x17	Internal door bres-54	69,13	1	0,7
PUI-64	580x380x17	Internal door bres-64	72,57	1	0,8
PUI-65	580x480x17	Internal door bres-65	76,08	1	0,9
PUI-83	780x280x17	Internal door bres-83	91,71	1	0,6
PUI-86	780x580x17	Internal door bres-86	103,43	1	2
PUI-108	980x780x17	Internal door bres108	246,48	1	3



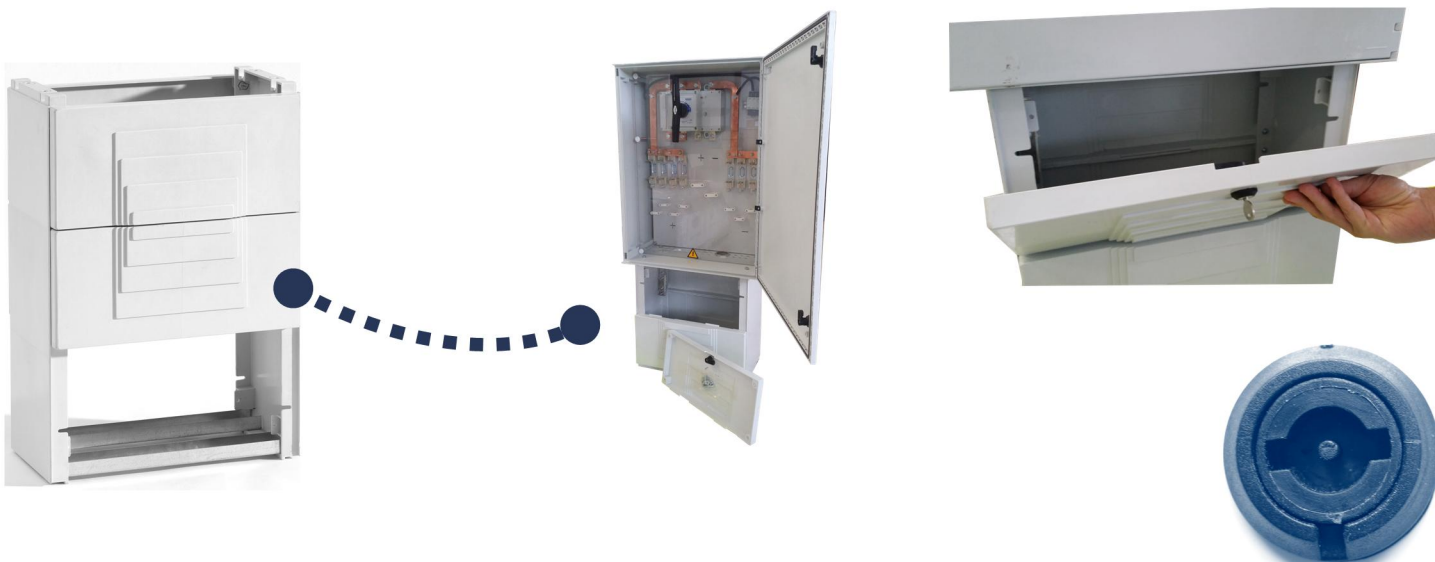
polyester internal door right opening, different lock options



pedestal for BRES

Includes : pedestal for BRES range, 3 sizes, customizable with keylock

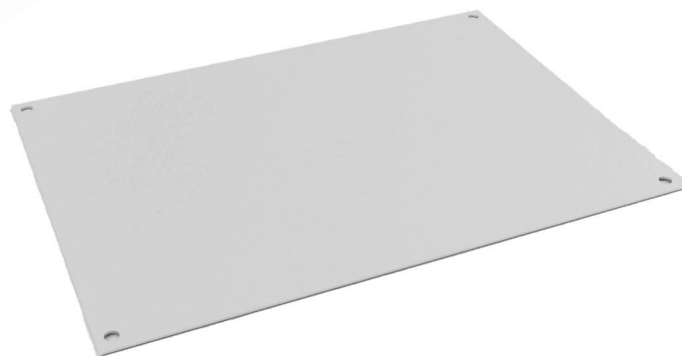
CODE	DIMENSION	DESCRIPTION	EUROS	PACKING	WEIGHT
F0-44	500x365x170	Pedestal for BRES-44	250,15	1	6,1
F1-44	750x365x170	Pedestal for BRES-44	273,27	1	7,9
F2-44	1000x365x170	Pedestal for BRES-44	296,51	1	8,85
F0-54	500x365x170	Pedestal for BRES-54	250,15	1	6,1
F1-54	750x365x170	Pedestal for BRES-54	273,43	1	7,9
F2-54	1000x365x170	Pedestal for BRES-54	296,51	1	8,85
F0-64	500x365x200	Pedestal for BRES-64	275,28	1	6,15
F1-64	750x365x200	Pedestal for BRES-64	297,52	1	7,95
F2-64	1000x365x200	Pedestal for BRES-64	318,93	1	8,9
F0-65	500x465x200	Pedestal for BRES-65	293,73	1	7,2
F1-65	750x465x200	Pedestal for BRES-65	321,75	1	8,9
F2-65	1000x465x200	Pedestal for BRES-65	331,63	1	9,9
F0-86	500x500x300	Pedestal for BRES-86	324,68	1	8,25
F1-86	750x500x300	Pedestal for BRES-86	352,70	1	10,1
F2-86	1000x500x300	Pedestal for BRES-86	358,95	1	11



polyester base plate for BRES

Includes : polyester base plate 4mm, we can offer up to 10mm under demand
 Not included screws m6x10

CODE	DIMENSION	DESCRIPTION	EUROS	PACKING	WEIGHT
PBP-325	262x198x40	mounting plate BRES325	7,12	10	0,38
PBP-43	360x248x40	mounting plate BRES43	11,91	10	0,59
PBP-44	460x348x40	mounting plate BRES44	17,00	10	0,87
PBP-54	560x348x40	mounting plate BRES54	18,07	10	1,09
PBP-64	558x348x40	mounting plate BRES64	26,87	5	1,30
PBP-65	558x448x40	mounting plate BRES65	31,06	5	1,75
PBP-83	756x248x40	mounting plate BRES83	33,62	5	1,46
PBP-86	756x548x40	mounting plate BRES86	57,05	5	2,78



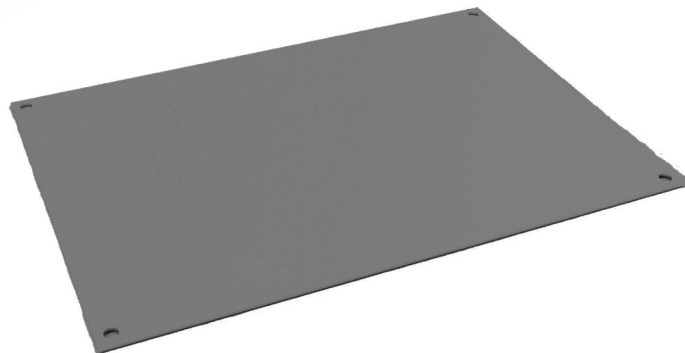
polyester no earthing base plate, ready to fix inside the bres cabinet



metal base plate for BRES

Includes : Galvanized steel mounting plate 2mm **Not included screws m6x10**

CODE	DIMENSION	DESCRIPTION	EUROS	PACKING	WEIGHT
PBM-325	262x198x20	mounting plate BRES325	16,58	5	0,79
PBM-43	360x248x20	mounting plate BRES43	19,01	5	1,30
PBM-44	460x348x20	mounting plate BRES44	26,87	4	1,90
PBM-54	560x348x20	mounting plate BRES54	27,15	4	2,20
PBM-64	558x348x20	mounting plate BRES64	42,41	4	3,00
PBM-65	558x448x20	mounting plate BRES65	47,54	4	3,60
PBM-83	756x248x20	mounting plate BRES83	49,82	2	3,26
PBM-86	756x548x20	mounting plate BRES86	61,94	2	6,40



Galvanized steel plate, ready to fix inside the bres cabinet



polyamide & brass locks

Includes : all kind of locks, totally customized. Sealable (Only Polyamide locks)

CODE	DIMENSION	DESCRIPTION	EUROS	PACKING	WEIGHT
CCU-08	1	8mm Square lock	8,11	1	0,03
CDB-10	2	Double bar closing system lock	8,11	1	0,03
CTR-11	3	11mm triangular lock	8,11	1	0,03
Tpac-apm	4	Allen lock	11,85	1	0,05
Tpac-apm	5	Square female lock	11,85	1	0,05
Tpci-apm	6	Hexagon female lock	11,85	1	0,05



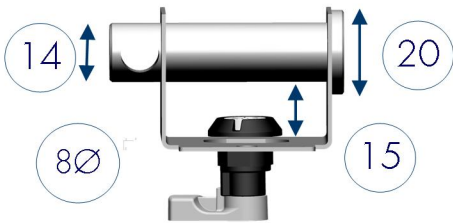
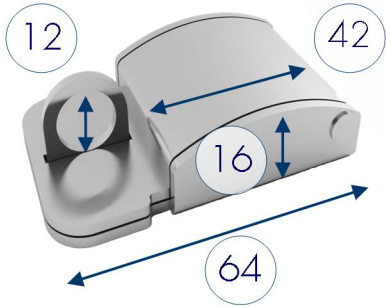
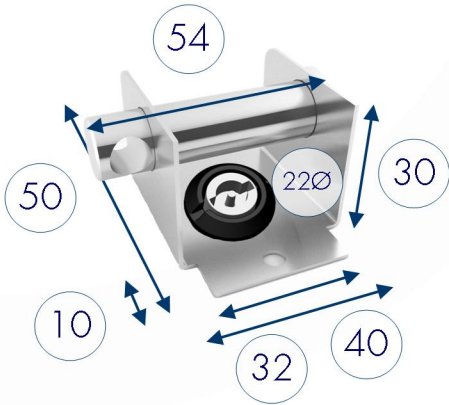
Standard hole for m22 locking system



padlocking options

Includes : all kind of locks, totally customized. Seasable (Orly Polyamide locks)

CODE	DESCRIPTION	EUROS	PACKING	WEIGHT
CBC-13	Lock by blocking padlock bichrome	7,62	1	0,5
CBC-13-inox	Lock by blocking padlock inox	32,43	1	0,5



Cbc-13 galvanized . Padlock not included

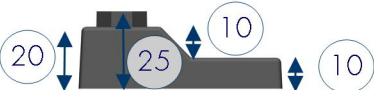
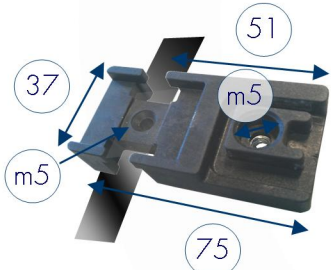
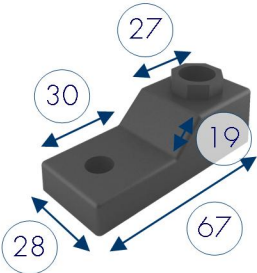
Cbc-13 inox . Padlock not included



wall brackets

Includes :mounting brackets made of Polyamide 6.6,
 4 units per bag, including screws. They stand up to 200 kgs

CODE	DESCRIPTION	EUROS	PACKING	WEIGHT
OFM-14	wall fastening lug	5,59	4	0,04
OFM-14-F	fastening lug for pole	24,77	4	0,08
OFM-14-B	wall fastening lug -back	6,60	4	0,04



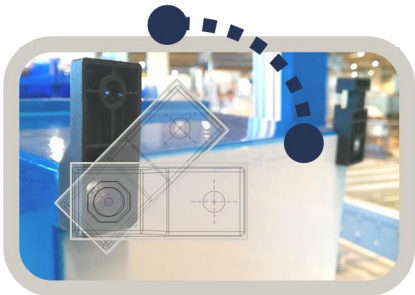
ofm-14-back
 drilling 8mm diam
 + 4 special screws for polyester



Orientable Direct wall mounting brackets

Pole mounting brackets

Orientable 45°-90°-180°
 wall mounting brackets



the use of wall mounting brackets
 is an option for the end user,
 safybox BRES has been specially
 designed to be mounted
 without them

the enclosure back has been designed
 with raised corners to keep
 a minimum gap with the wall surface and allow
 water to drain down, avoiding
 wall mounting brackets extra cost



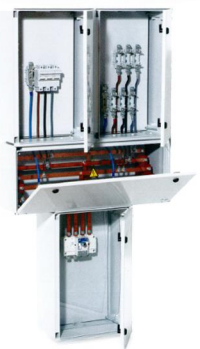
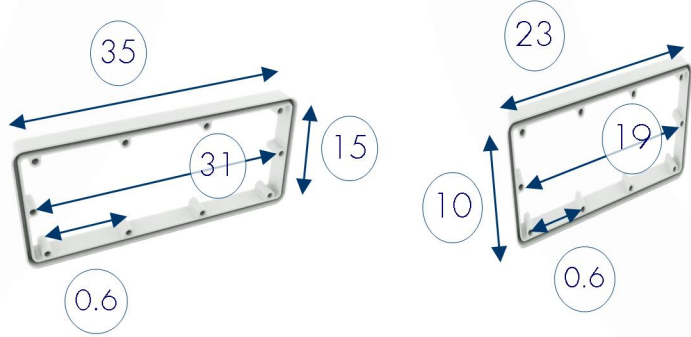
connecting flanges IP66

Includes :connecting flange + plastic screws m8x50
 Mainteining IP66 even fixing cabinets

CODE	DESCRIPTION	EUROS	PACKING	WEIGHT
UA-230x100	Connecting flange for bres-325&43	8,73	1	0,15
UA-350X150	Connecting flange for rest BRES	10,36	1	0,20
UA-350X150-B	Connecting flange for rest BRES	10,36	1	0,25

UA-230x100

UA-350x150



UA-350x150-B
 (vertical+horizontal)

bres 64 + bres-54



ventilation devices up to IP68

Includes : ventilation device pairs + nuts

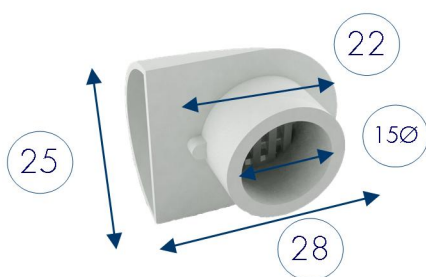
CODE	DESCRIPTION	EUROS	PACKING	WEIGHT
LLD-10	Double bar key	1,01	1	0,10
LLT-11	Triangular key-11MM	1,01	1	0,10
LLC-08	SQUARE KEY 8MM	1,01	1	0,10
CML-12	Lock and key	9,77	1	0,50
DV-M	Small ventilation device	0,88	1	0,10
DV-G	Big ventilation device	3,11	1	0,10



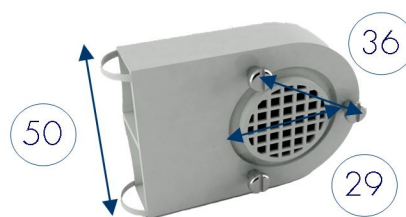
lld-10



cml-12 (1333)



dv-m



dv-a



depth adjustment device

Includes : raiser + 2nuts. 4 units per bag

CODE	DESCRIPTION	EUROS	PACKING	WEIGHT
SDP-200	for bres-325-43-44 Depth adjust	23,52	1	0,5
SDP-230	for bres-54-64-65-83 Depth adjust	23,24	1	0,6
SDP-300	for bres-86 Depth adjust	24,56	1	0,7
EJB-BRES	Hinge pin for BRES	0,10	1	0,01



Sdp-depth adjust

non metallic hinge parts

